

Configuring Your Mail Client - Netscape

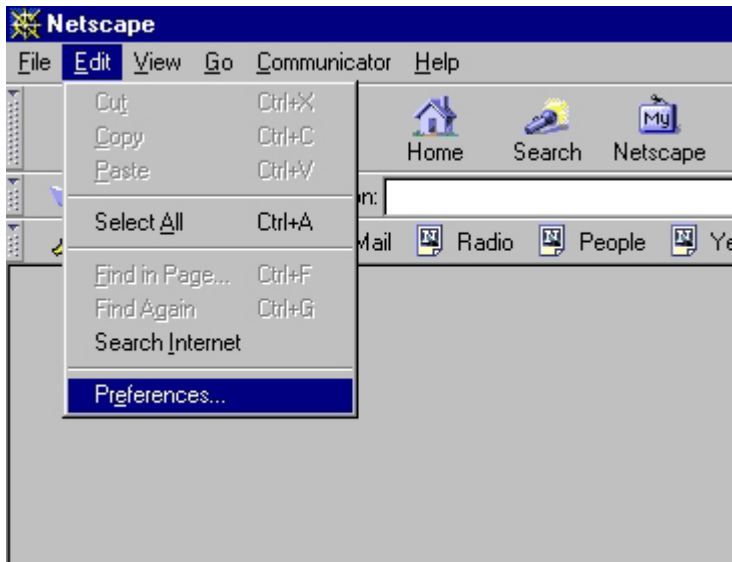
[A. Netscape Messenger 4.X](#)

[B. Netscape Messenger 6.1](#)

A. Netscape Messenger 4.X

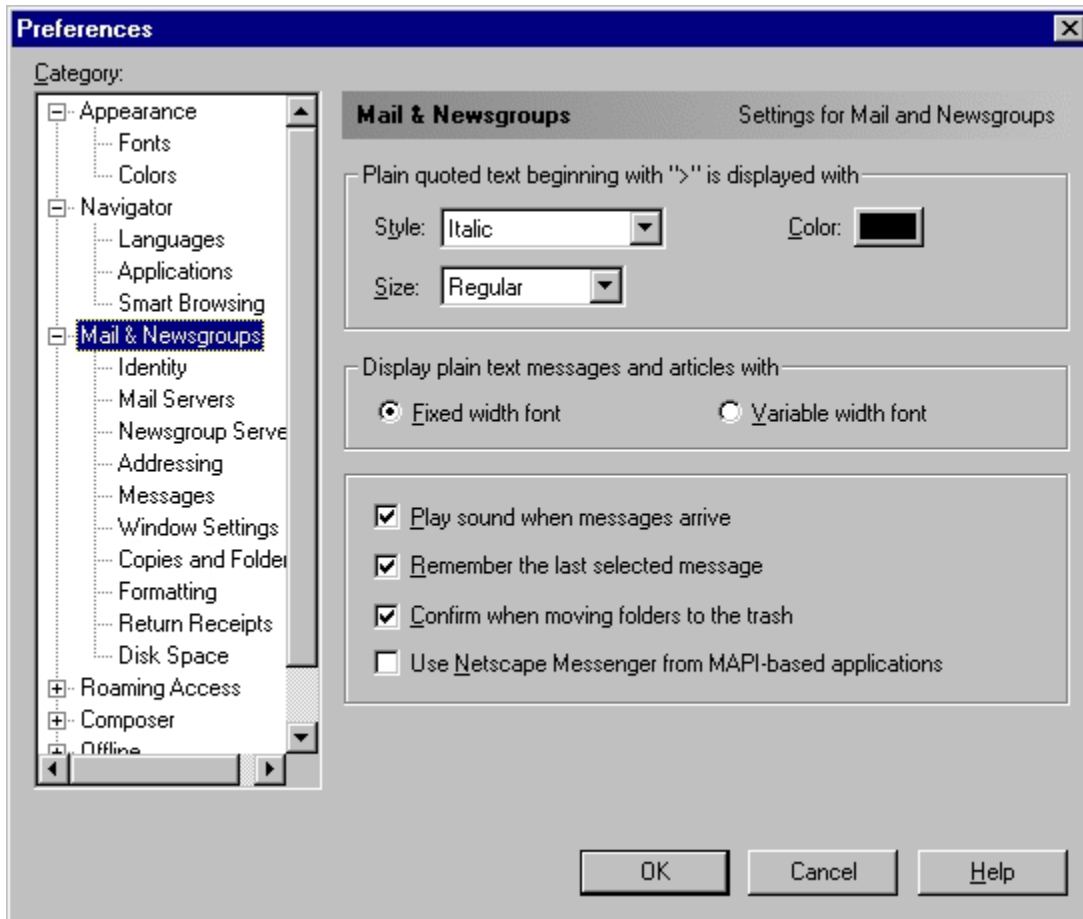
Configuration Steps

1. Start Netscape Navigator, when the Netscape Navigator main screen appears, click on the **Edit** menu item on the top menu bar (or press ALT-E), then choose/click on the sub-option called **Preferences**.



2. When the **Preferences** screen appears, click on the plus symbol next to the **Mail & Newsgroups** item listed on the left.

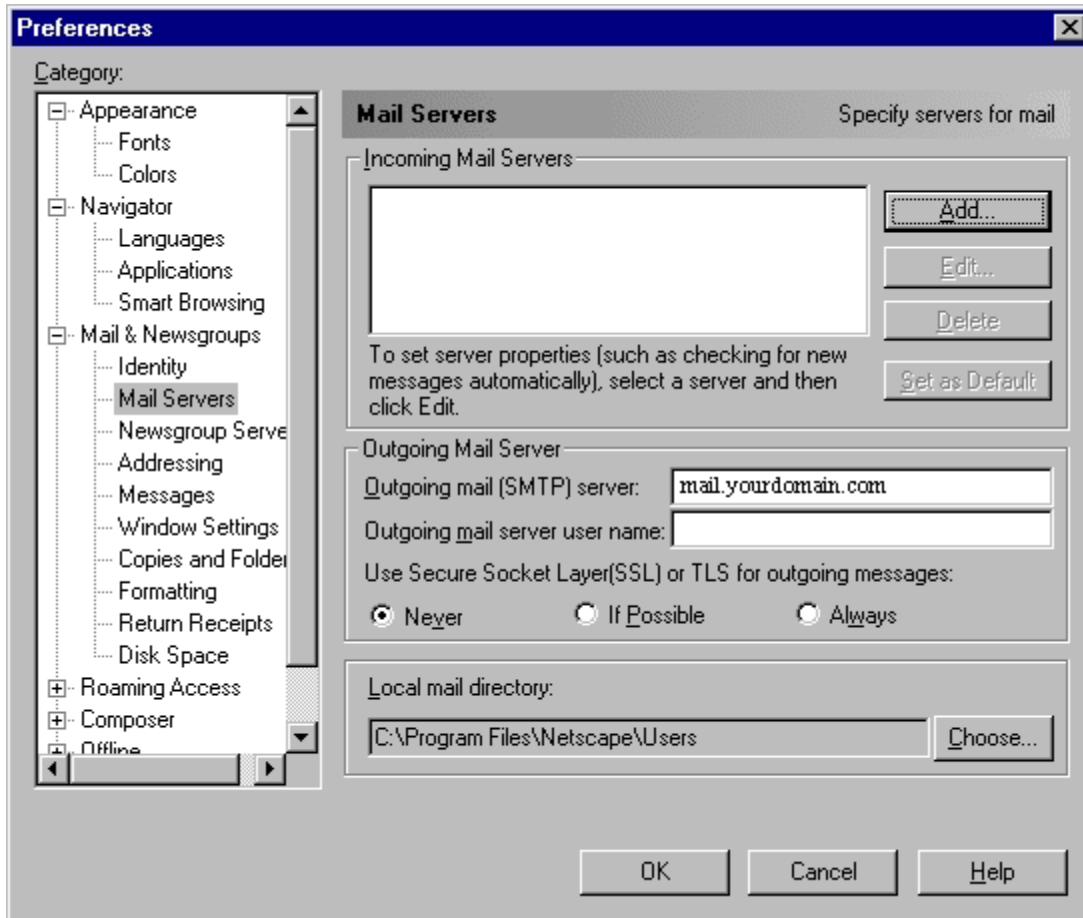




3. On the **Mail Servers** screen, enter the Outgoing mail (SMTP) server name:
mail.yourdomain.com.

Please **DO NOT** enter anything in the Outgoing mail server user name box. Otherwise you will keep receiving "password incorrect" error messages.



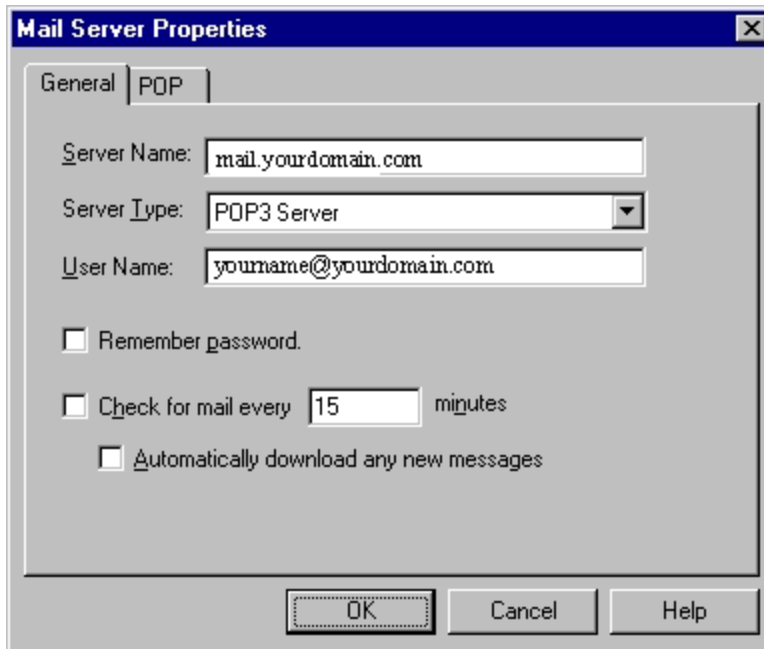


4. Next, still on the **Mail Servers** screen, click on the **Add** button to add your Incoming server name and parameters. This will bring up the **Mail Server Properties** screen for the account. Here you will enter in information regarding the server where you will get your mail from.

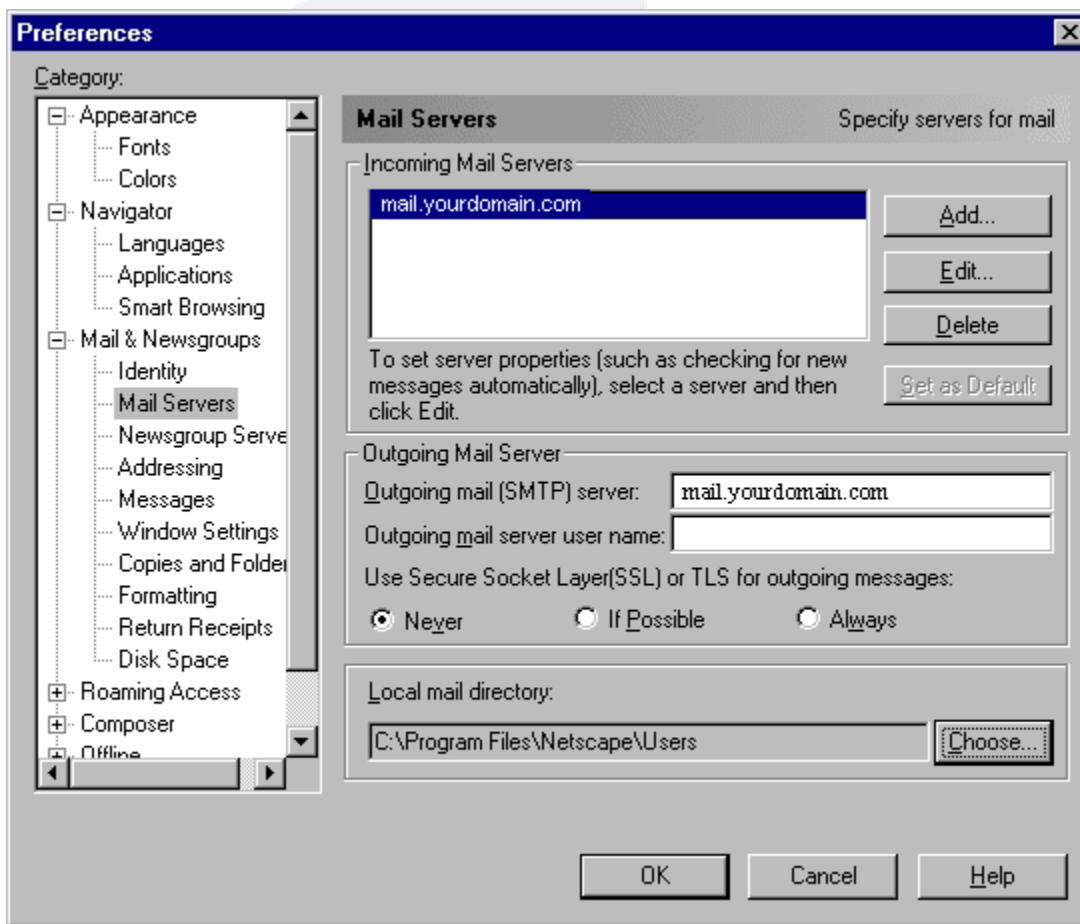
Make sure that the Server Type is set to POP3 on this screen, then enter the Server Name for your domain (this is your Incoming Server name). The example Server Name used is **mail.yourdomain.com**. Click the **OK** button when finished.

Enter the User Name as shown below, but if it doesn't work make your User Name like this: name%domain.com





5. Your settings should now look similar to the information below.



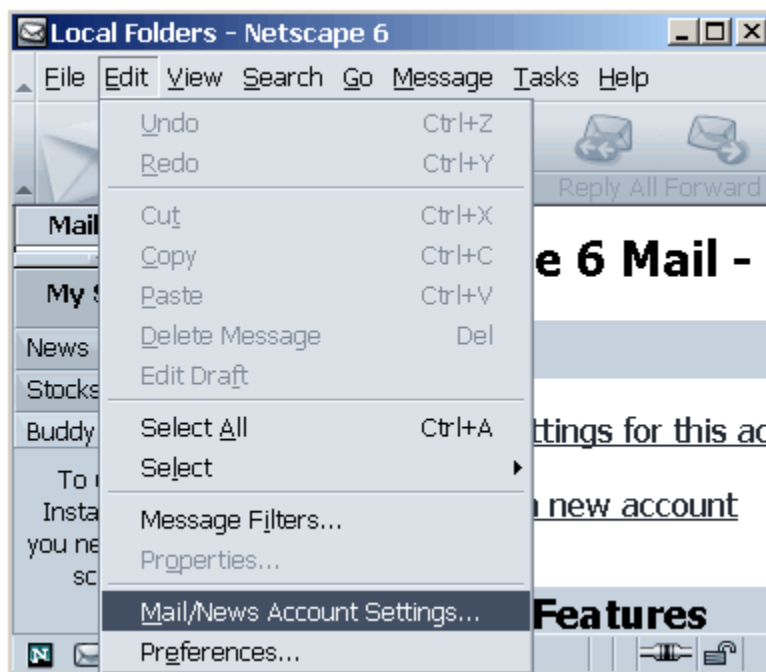
6. After verifying the above information is correct, click the **OK** button on all screens to return to the main Netscape Navigator screen. You may need to close Netscape Navigator and then start it again.

Configuration is complete!

B. Netscape Messenger 6.1

Configuration Steps

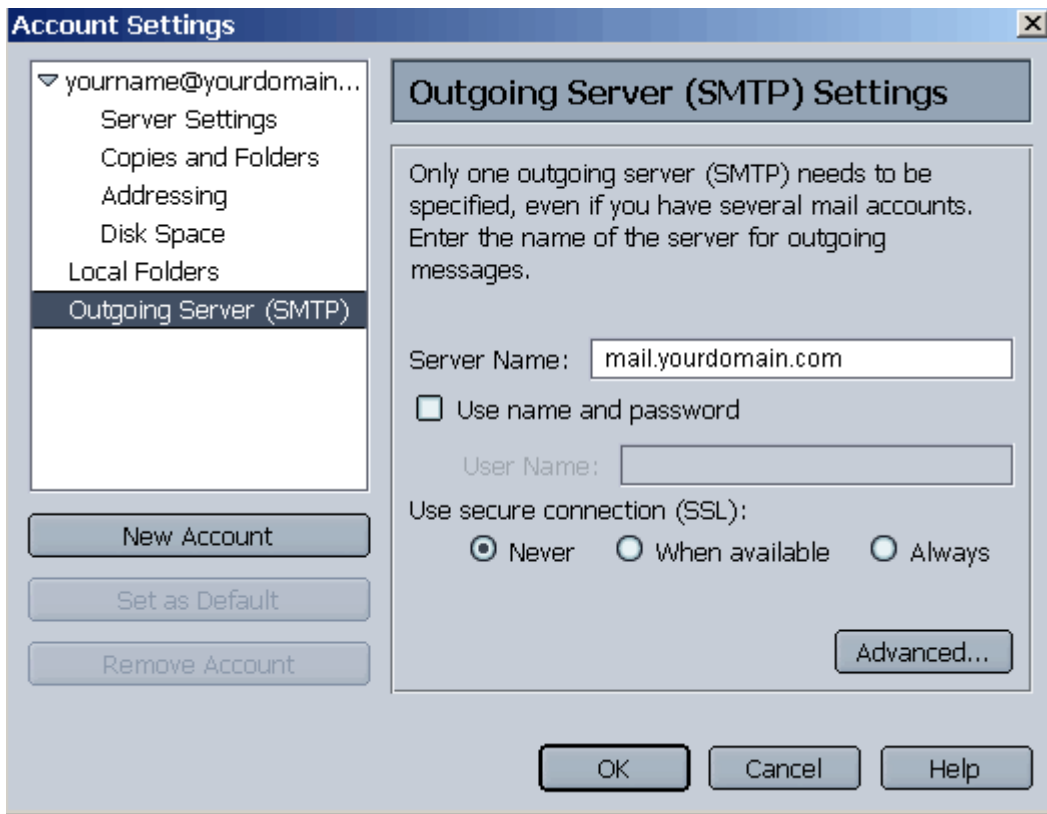
1. Open Netscape Mail from Start/Programs/Netscape 6/Mail. If you already have Netscape Navigator main screen open, click on the **Tasks** menu item on the top menu bar (or press ALT-T), then choose/click on the sub-options called **Mail**.
2. In the **Mail Window**, open the "**Edit**" menu and choose "**Mail/News Account Settings**."



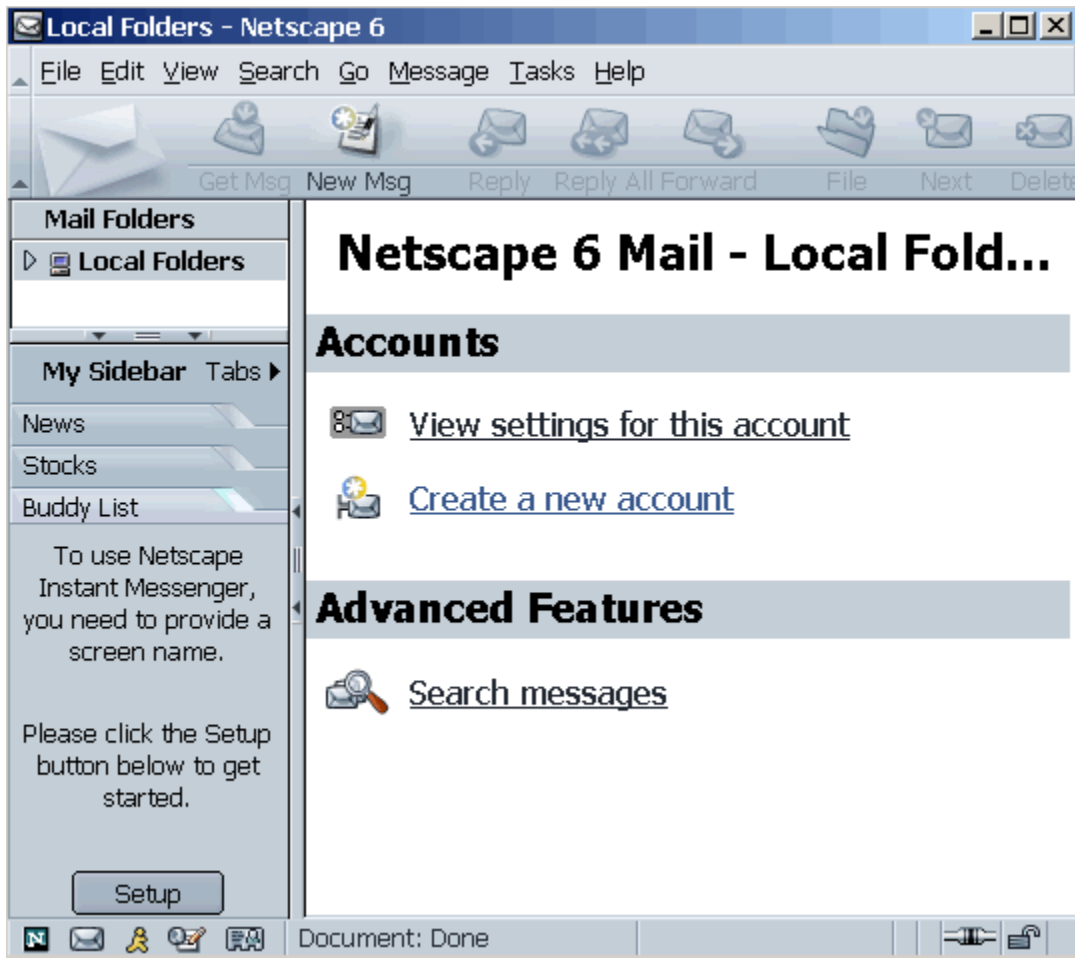
3. Then on the **Account Settings** dialog box, click choose "Outgoing Server (SMTP)" on the left window, and enter your mail server name, the example domain used is **mail.yourdomain.com** in the **Server Name** box on the right.

Please **do not** check the "User name and password" box. Under "Use secure connection (SSL)", choose "**Never**." Then, click **OK**.

(You can click "**New Account**" and finish the Wizard first, and then come back and edit the Outgoing Server Settings.)

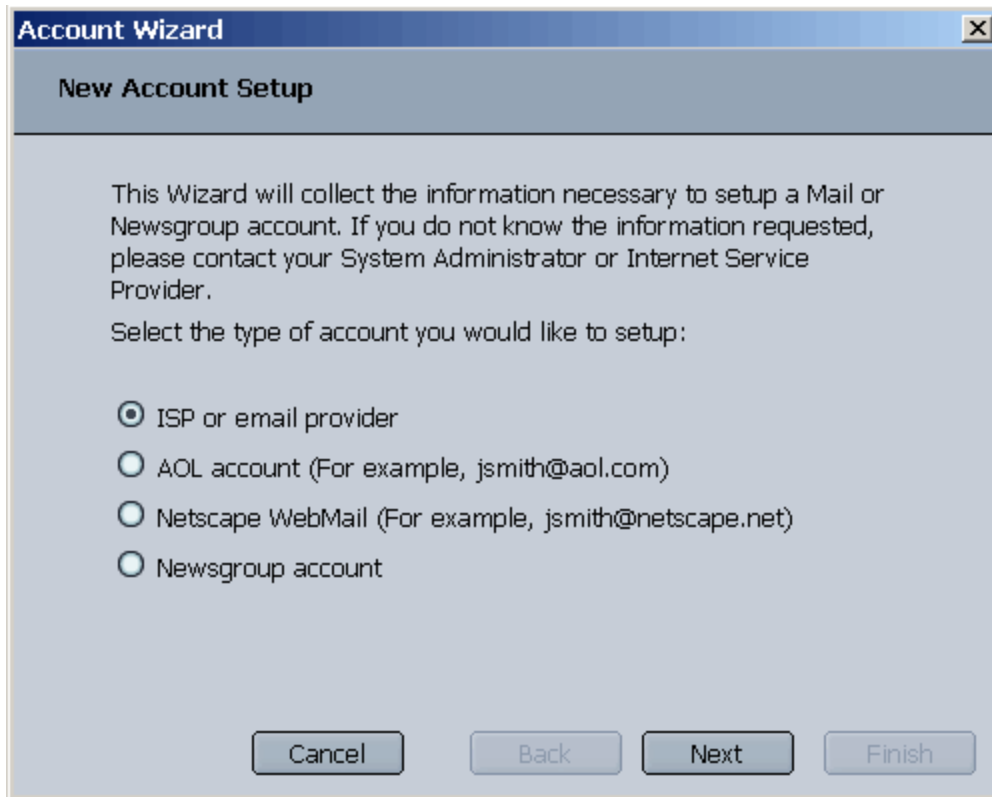


4. When you are back to the Local Folders window, click on the **"Create a new account"** link under **Accounts** to activate the New Account wizard.

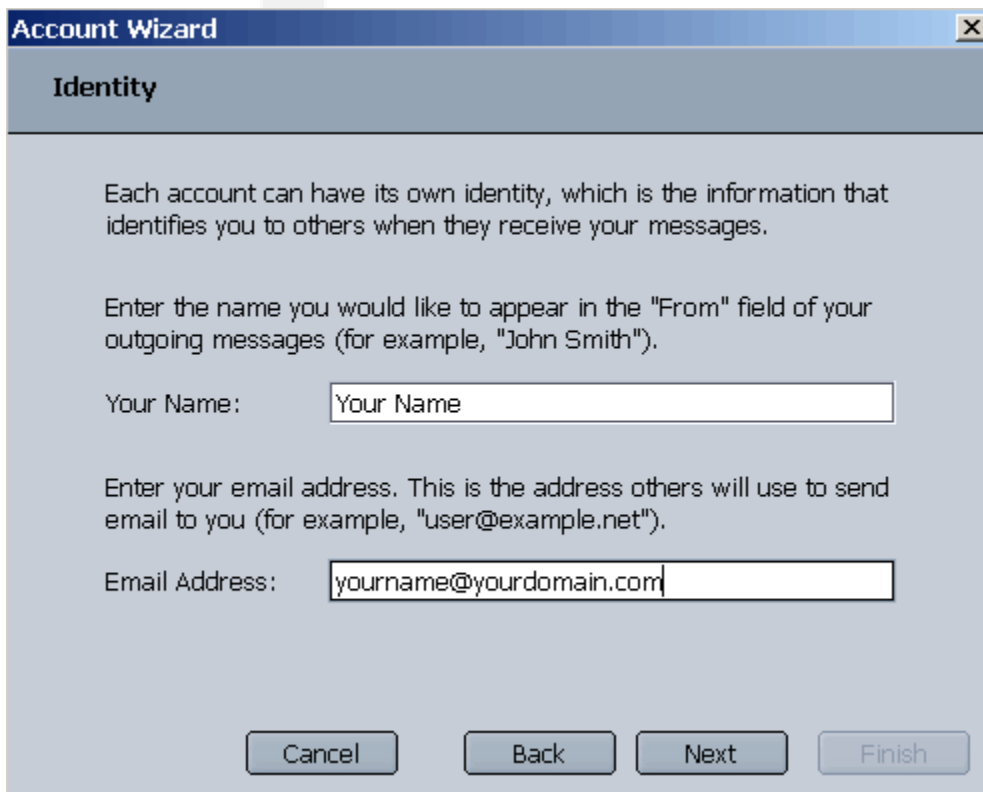


5. Choose the type of account you want to set up, and click **Next**.



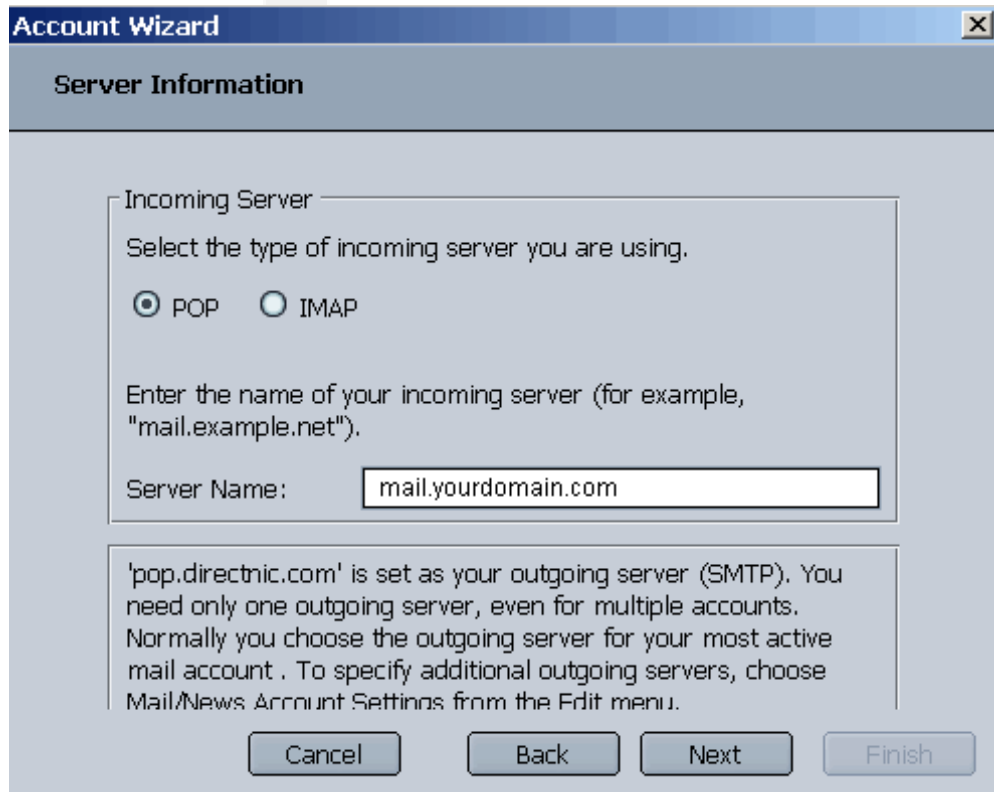


6. In the **Identity** section, enter your name (as you would like it to appear in the "From" field of messages you send) and email address (yourname@yourdomain.com), and click **Next**.



7. In the **Server Information** section, select the type of incoming mail server POP3. Enter the incoming server name and the outgoing (SMTP) server name. The example domain used is **mail.yourdomain.com**. Then click "Next."

Note: Only one outgoing mail server (SMTP) needs to be specified, even if you have several mail accounts. If you have not configured the SMTP settings, then you should go back to steps 2 & 3 when you finish the wizard.

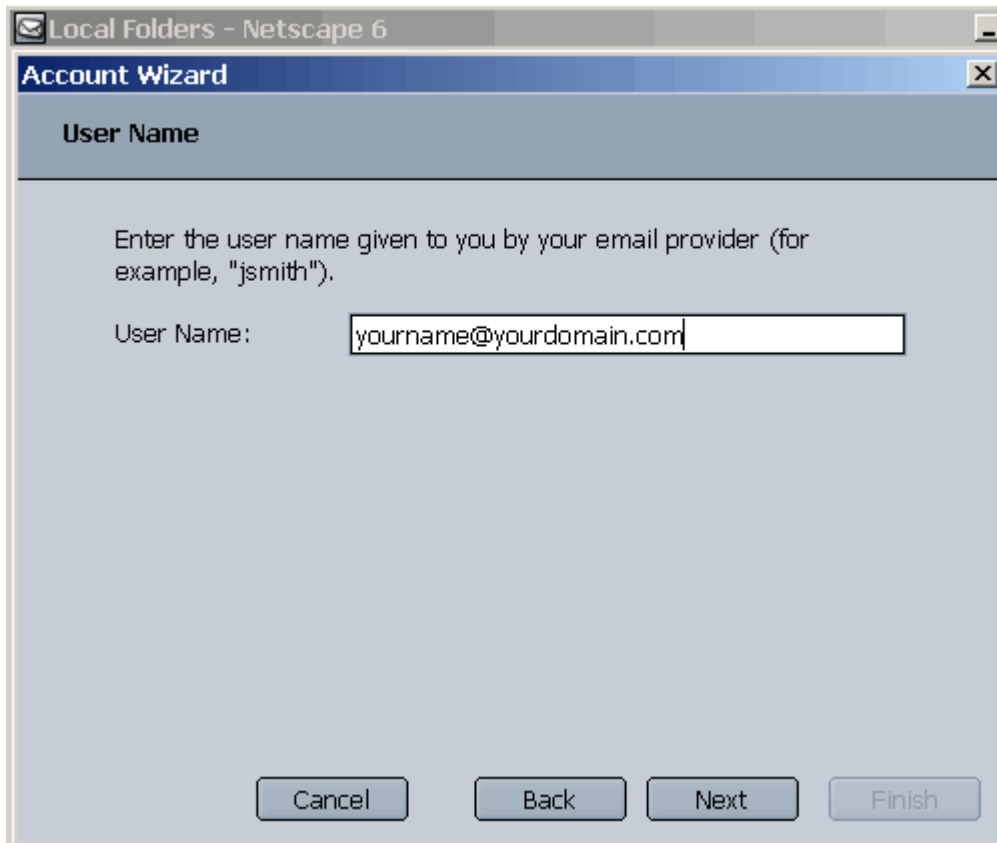


The screenshot shows a Windows-style dialog box titled "Account Wizard" with a close button in the top right corner. The main title bar is blue. Below the title bar, the dialog has a header section titled "Server Information". The main content area is light gray and contains the following elements:

- A section titled "Incoming Server" with a subtitle "Select the type of incoming server you are using." Below this are two radio buttons: "POP" (which is selected) and "IMAP".
- A text box with the label "Server Name:" containing the text "mail.yourdomain.com". Above the text box is the instruction: "Enter the name of your incoming server (for example, 'mail.example.net').".
- A larger text box containing the following text: "'pop.directnic.com' is set as your outgoing server (SMTP). You need only one outgoing server, even for multiple accounts. Normally you choose the outgoing server for your most active mail account. To specify additional outgoing servers, choose Mail/News Account Settings from the Edit menu."
- At the bottom of the dialog are four buttons: "Cancel", "Back", "Next", and "Finish".

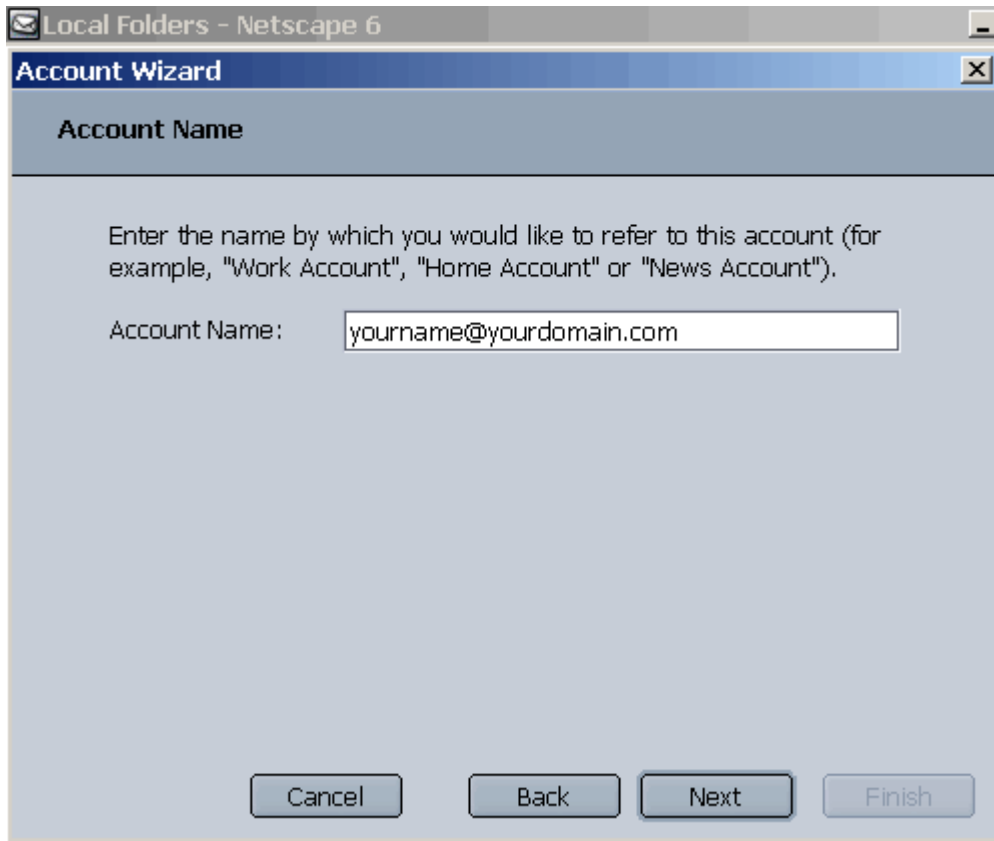
8. In the **User Name** section, enter your full email address (yourname@yourdomain.com) and click "Next." If it doesn't work make your account name like this: yourname%yourdomain.com





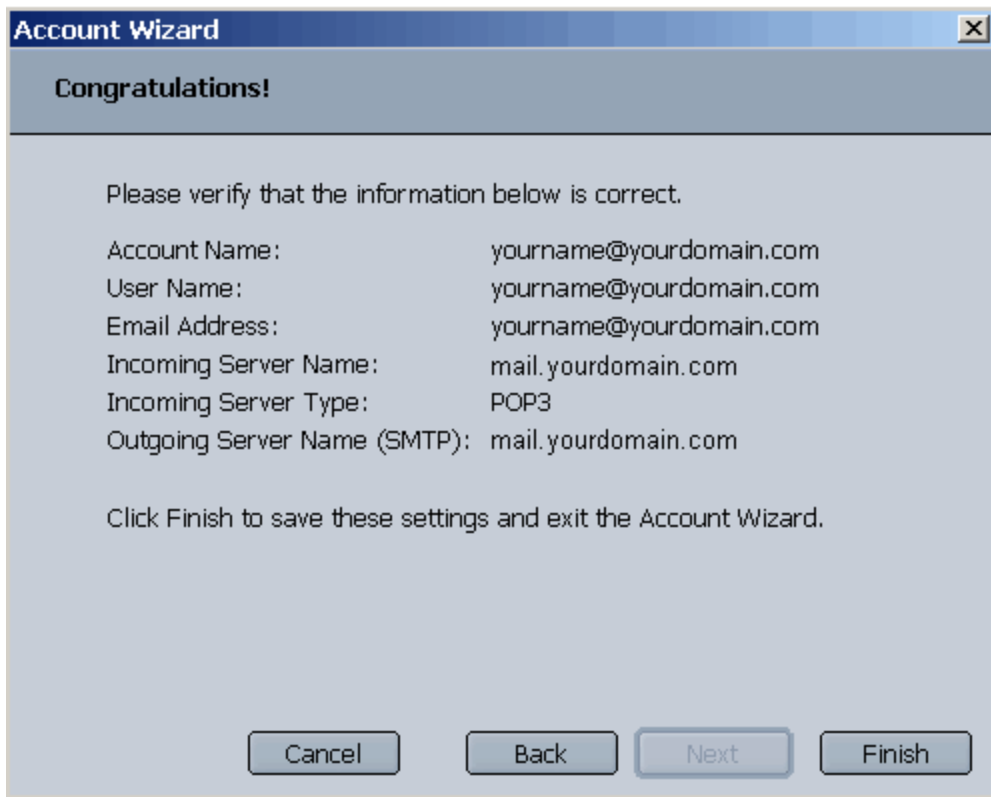
9. In the **Account Name** section, assign a name for this account (for example, "Work" or "Family" or simply your email address), and click "Next."





10. Verify that the information you entered is correct. If necessary, verify the information you entered with your ISP or system administrator. Then click **Finish** to set up your account.





Configuration is complete!

Mash

Mash