

Configuring Your Mail Client - Pegasus

Configuring your Local Email Client (Pegasus Mail):

Follow the instructions below to configure Pegasus Mail for use with your account.

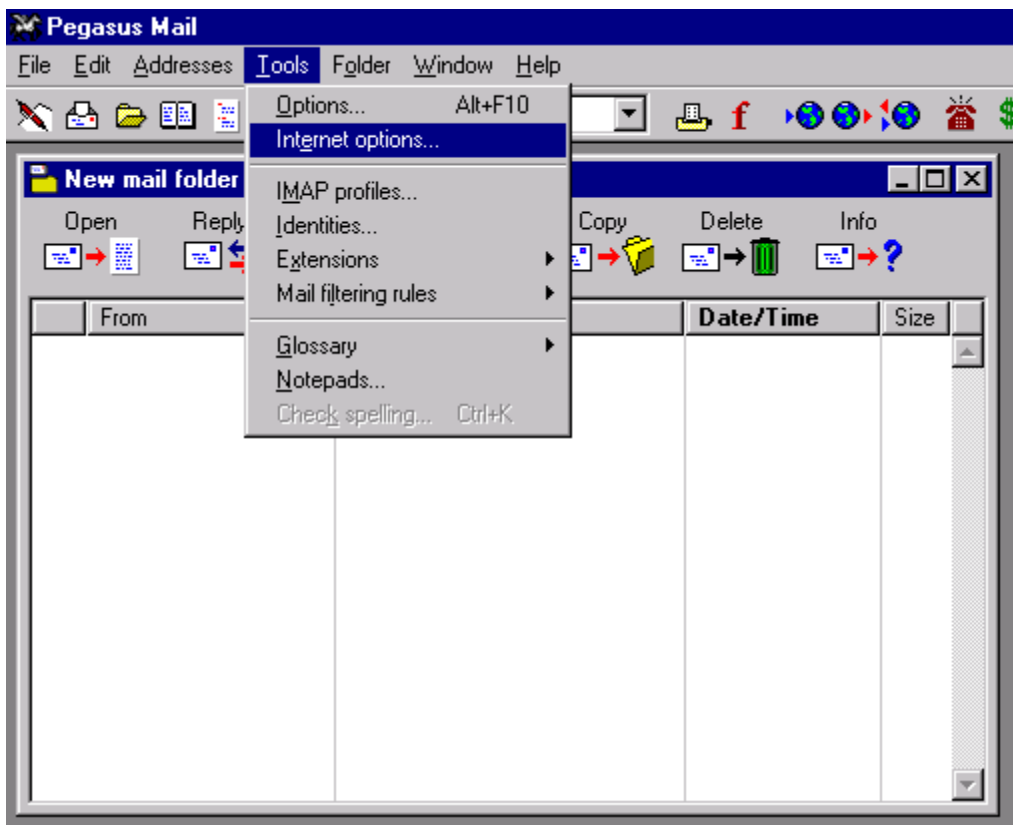
Note: An example account name was used through the instructions. Please substitute your email address information for the account used in the instructions.

The example email address is: **yourname@yourdomain.com**

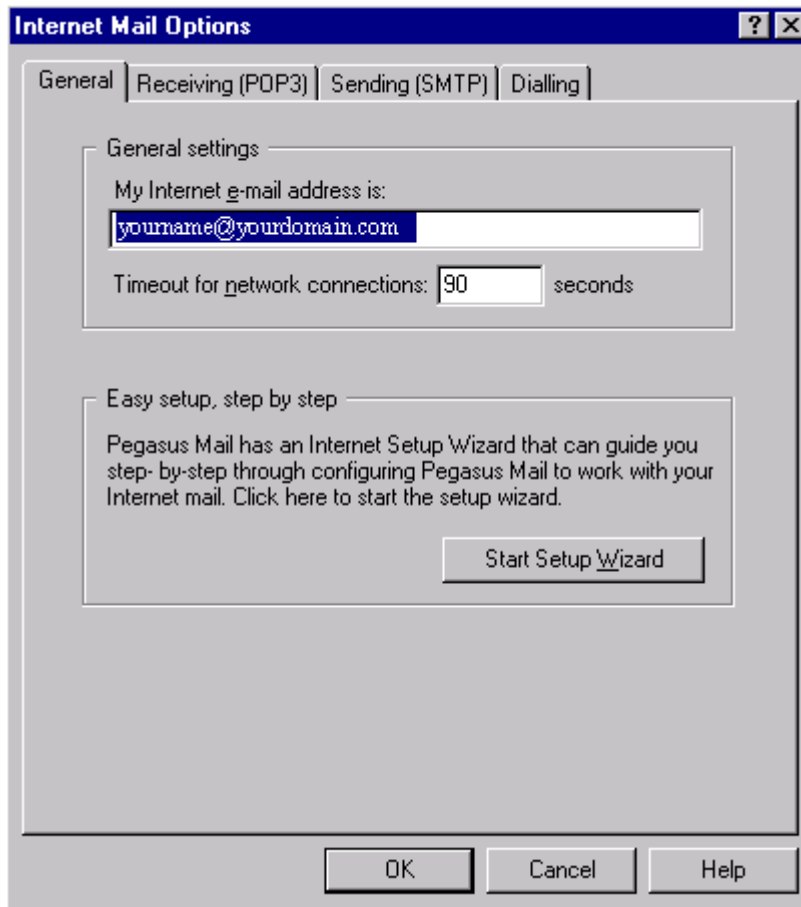
The example Domain is: **yourdomain.com**

Configuration Steps

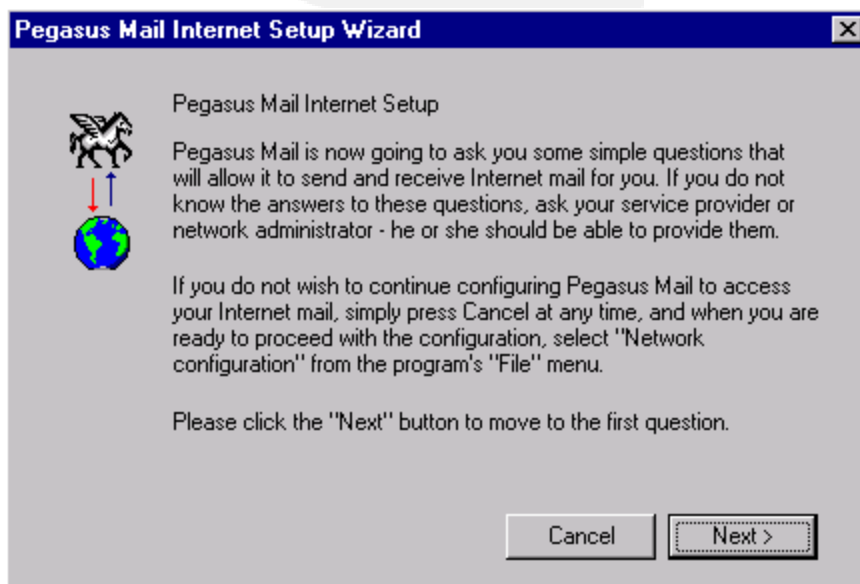
1. Start Pegasus mail from your desktop or from Start/Programs/Pegasus. Go to the **Tools** menu, then select **Internet Options**.



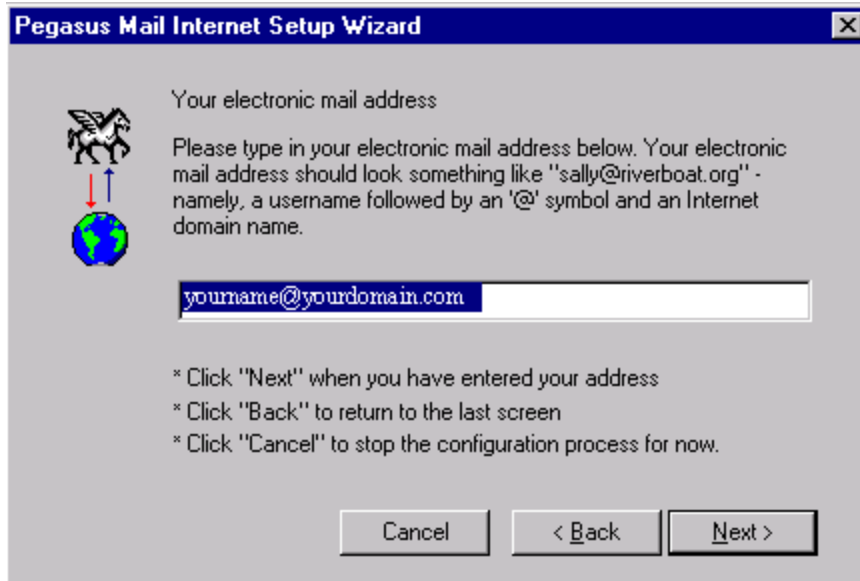
2. Click on the **Start Setup Wizard Box**.



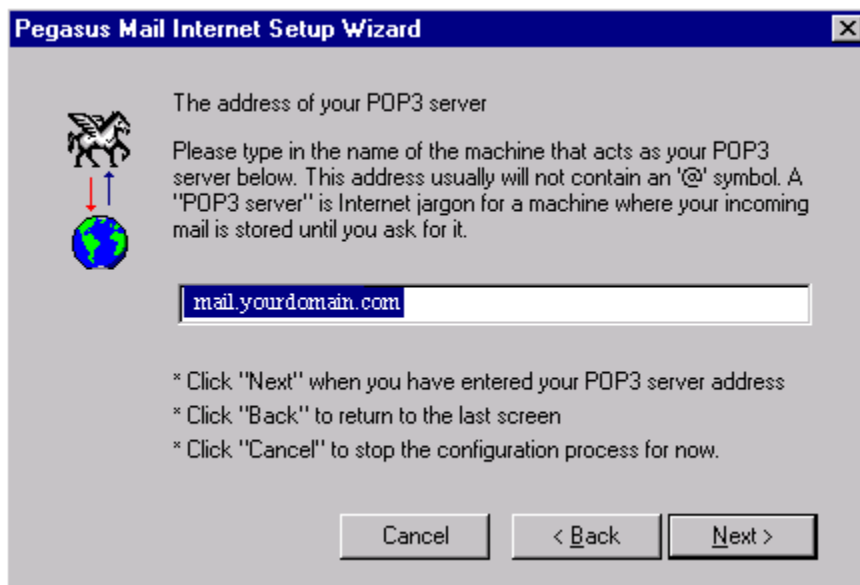
3. On the first screen, click **Next**.



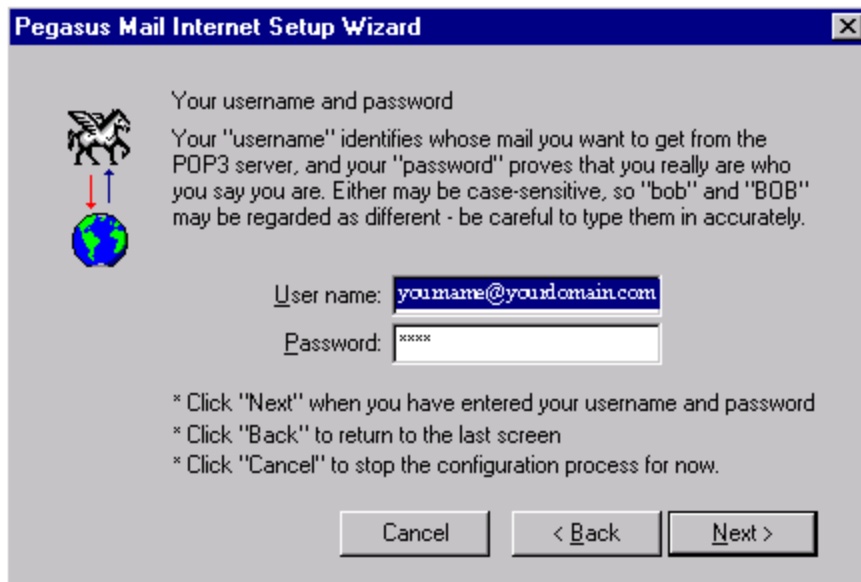
4. On the second screen, enter your email address, then click **Next**.



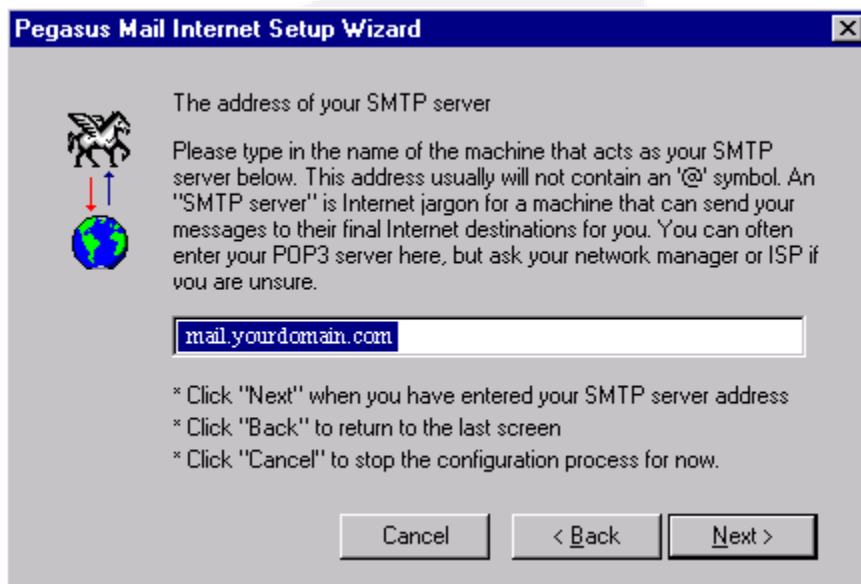
5. On the third screen, enter your POP3 Server. The example mail server used is **mail.yourdomain.com**. Then click **Next**.



6. On the fourth screen, enter your user name and password. Your user name is your full email address. In the example, it is yourname@yourdomain.com. Your password is your POP3 account password. Then click **Next**.

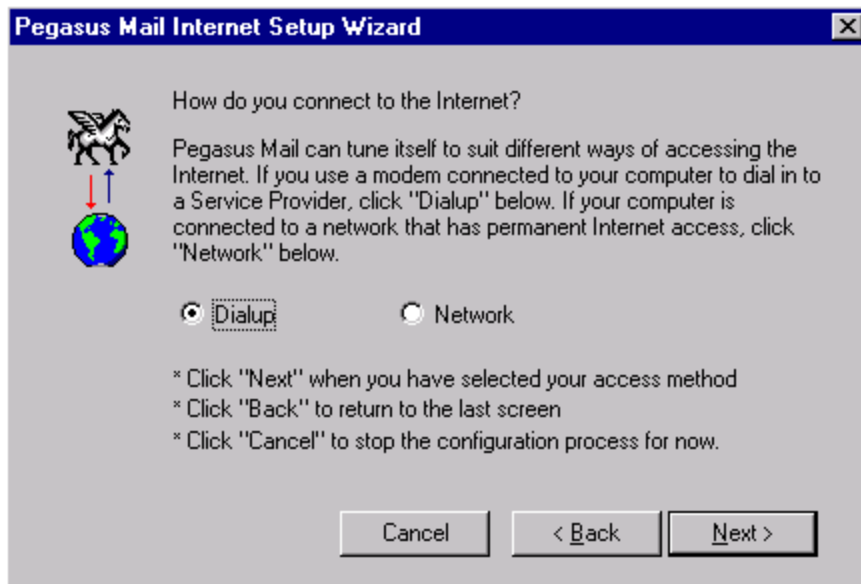


7. On the fifth screen, enter your SMTP server. The example domain used is **mail.yourdomain.com**. Then click **Next**.

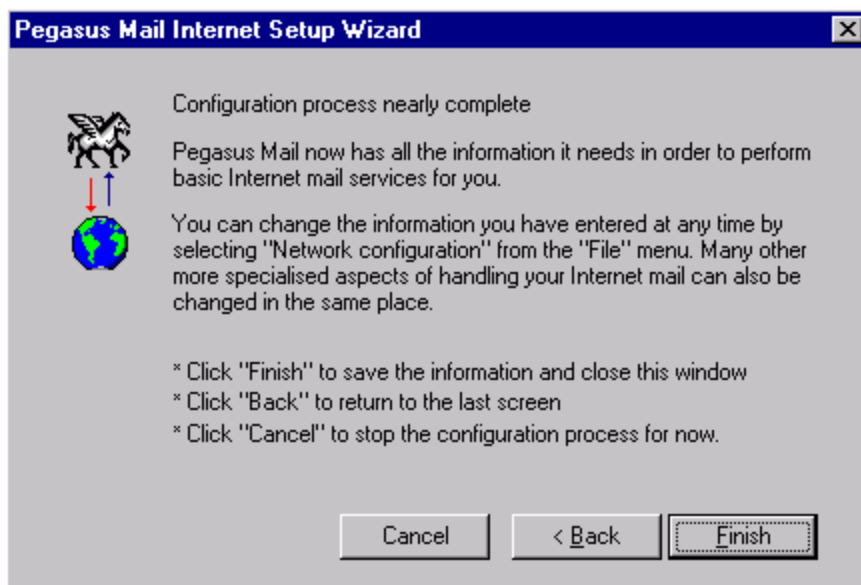


8. On the sixth screen, choose your Internet connection, Then click **Next**.

Mash

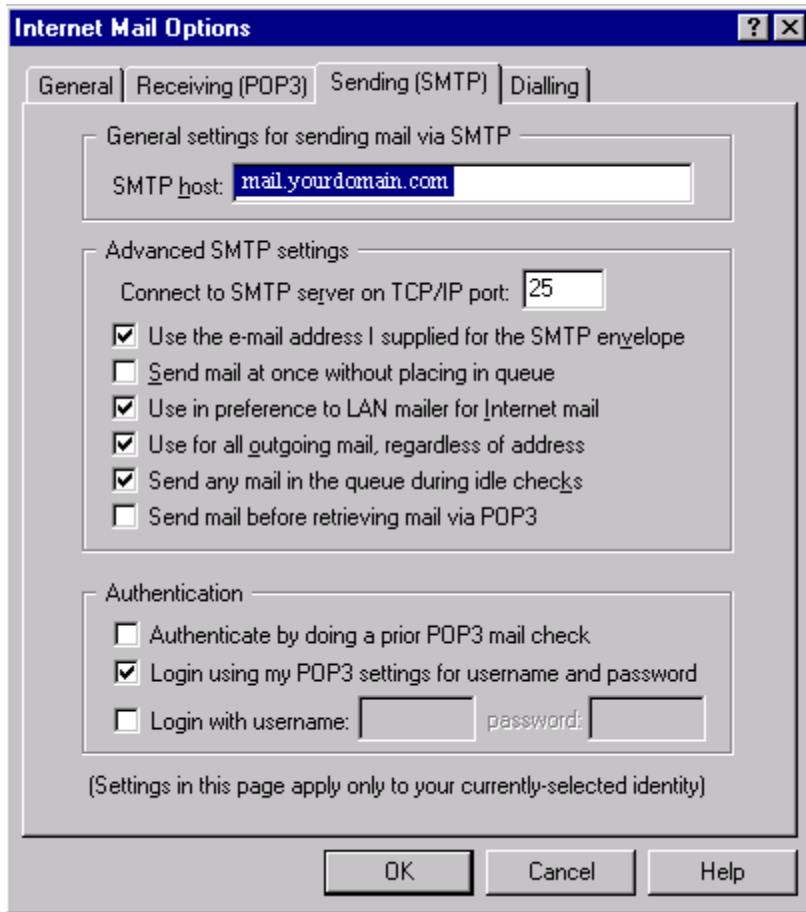


9. On the seventh screen, click **Finish**.



10. Back on the **Internet Mail Options** screen, click the **Sending (SMTP)** Tab. In the **Authentication** Box, check the **Login** using your POP3 settings for username and password. Click **OK**.

Mash



Configuration is complete!

